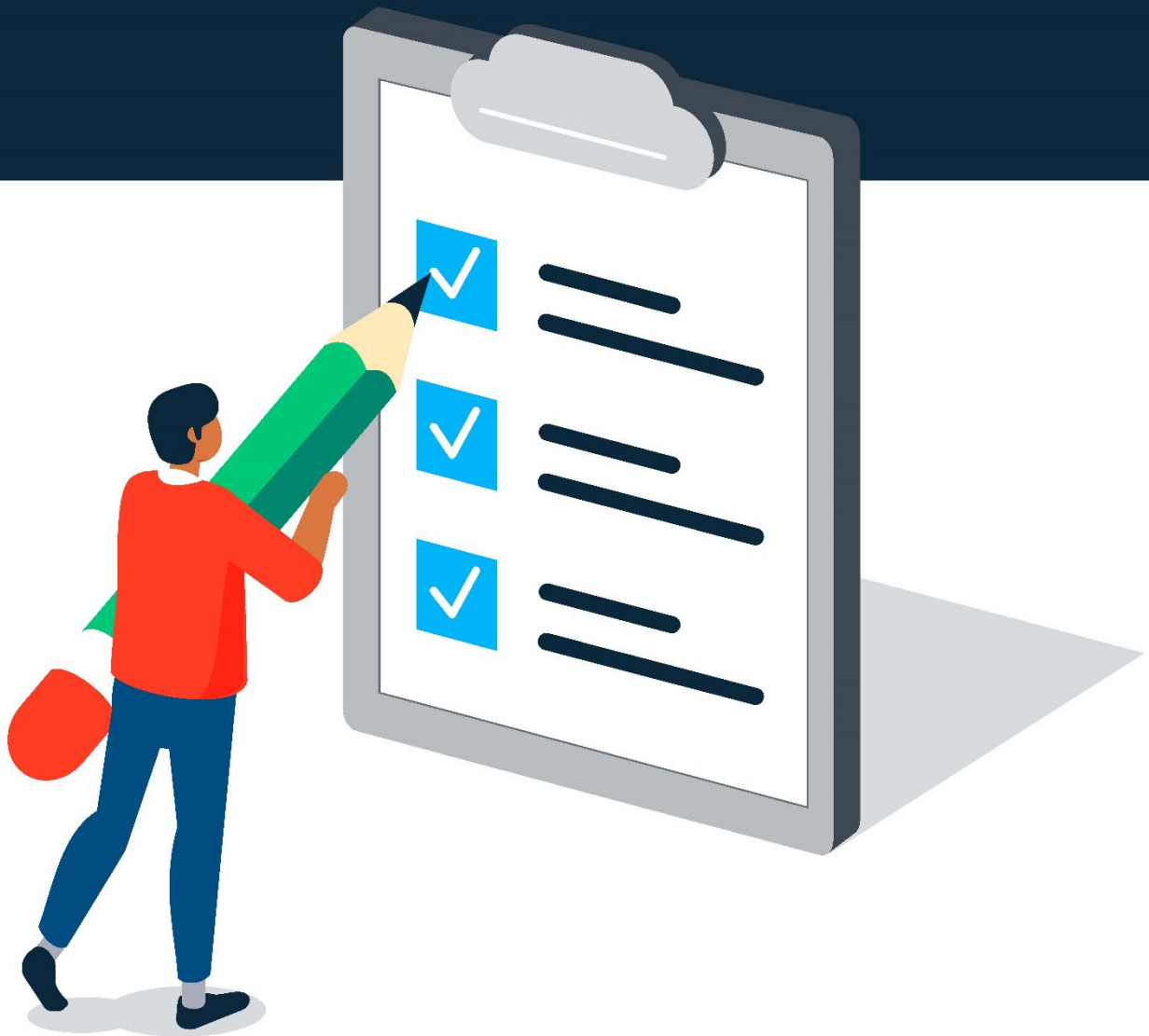


# Carbon Reduction Plan

A template for businesses

Trident Utilities



## Glossary

Section	Description
Executive summary	This section should provide a brief overview of the plan, including your organisation's carbon footprint, its goals for reducing emissions, and the key strategies it will use to achieve those goals.
Baseline emissions	These are your current greenhouse gas emissions. You calculate them by using a greenhouse gas emissions calculator or by hiring a consultant to conduct an emissions inventory.
Emissions reduction goals	Here is where you should set clear and ambitious goals for reducing emissions. These goals should be specific, measurable, achievable, relevant, and time bound.
Strategies for reducing emissions	This section should outline the specific actions your organisation will need to take to reduce its emissions. These actions can include energy efficiency measures, renewable energy procurement, and changes to transportation and waste management practices.
Implementation plan	This is an outline of the steps your organisation will implement for its emission reduction strategies. This includes setting timelines, assigning responsibilities, and allocating resources.
Monitoring and evaluation	This section should describe your plan to track your organisation's progress towards its emissions reduction goals. This includes setting up a monitoring system, collecting data, and analysing results.
Communication and engagement	This final component covers how you plan to communicate the organisation's carbon reduction plan to all relevant stakeholders. This includes employees, customers, suppliers, and the community.

## 1. Commitment to achieving net zero

[Supplier name] is committed to achieving Net Zero emissions by 20XX.

## 2. Baseline emissions footprint

Baseline emissions are a record of the greenhouse gases that have been produced in the past and prior to the introduction of any strategies to reduce emissions. Baseline emissions are the reference point against which emissions reduction can be measured.

[Instructions to suppliers: Please provide details of your organisation’s baseline emissions below. If your organisation has not previously assessed or reported emissions, please detail this below and use your first reporting period as your Baseline.]

Baseline Year: 20XX	
Additional Details relating to the Baseline Emissions calculations.	
<i>[Instructions to Suppliers: Add commentary regarding your Baseline Emissions as required: e.g. historic baseline which deviates from the requirements under this measure (e.g. no prior scope 3 emissions reporting), where there is no previous reporting and the creation of a new baseline due to substantial organisational change or restructuring]</i>	
Baseline year emissions:	
Emissions	Total (tCO2e)
Scope 1	XX
Scope 2	XX
Scope 3 (Included Sources)	XX
Total Emissions	XX

### 3. Current emissions reporting

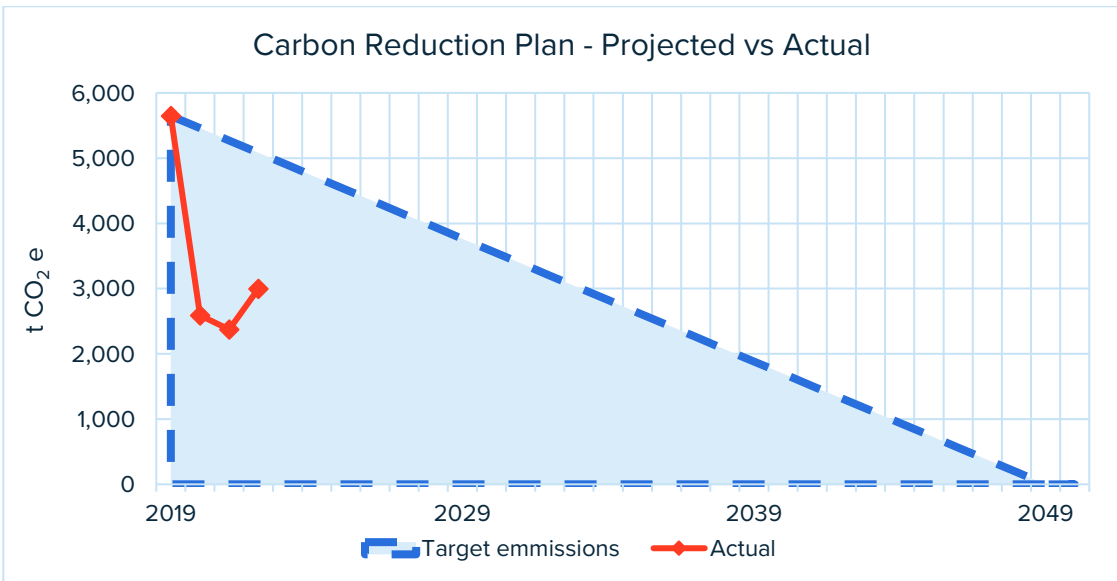
Reporting Year: 20XX	
Emissions	Total (tCO2e)
Scope 1	XX
Scope 2	XX
Scope 3 (Included Sources)	XX
Total Emissions	XX

### 4. Emissions Reduction Target

*[Instructions to Suppliers: If existing emissions reduction targets are in place for your organisation, please provide details below. If you have no previous emissions reduction commitment, or if this is your organisation’s first carbon footprint, please provide targets for your organisation]*

To continue our progress towards achieving Net Zero, we have adopted the following carbon reduction targets. We project that carbon emissions will decrease over the next five years to XX tCO2e by 20XX. This is a reduction of XX%

Progress against these targets can be seen in the graph below:



## 5. Carbon Reduction Projects

### Completed Carbon Reduction Initiatives

The following environmental management measures and projects have been completed or implemented since the 20XX baseline. The carbon emission reduction achieved by these schemes equates to XX tCO<sub>2</sub>e, an XX%ge reduction against the 20XX baseline and the measures will be in effect when performing the contract

*[Instructions to Suppliers: Briefly provide details of some of your completed carbon reduction projects. This is for information only. This may include environmental management measures such as certification schemes like ISO14001 or PAS 2060, signing up to SBTi or specific measures you have taken such as; the adoption of LED/PIR lighting controls, changes to policy resulting in a reduction in company travel and flights or the electrification of the company fleet.]*

In the future, we hope to implement further measures such as:

*[Instructions to Suppliers: Briefly provide details of some of any likely/proposed future carbon reduction projects. This is for information only.]*

## 6. Declaration and sign off

This Carbon Reduction Plan has been completed in accordance with PPN 06/21 and associated guidance and reporting standard for Carbon Reduction Plans.

Emissions have been reported and recorded in accordance with the published reporting standard for Carbon Reduction Plans and the GHG Reporting Protocol corporate standard and use the appropriate Government emission conversion factors for greenhouse gas company reporting.

Scope 1 and scope 2 emissions have been reported in accordance with SECR requirements, and the required subset of scope 3 emissions have been reported in accordance with the published reporting standard for Carbon Reduction Plans and the Corporate Value Chain (scope 3) Standard.

This Carbon Reduction Plan has been reviewed and signed off by the board of directors (or equivalent management body).

Signed for and on behalf of the Client	
<b>Signature</b>	<b>Name</b>
<b>Date</b>	<b>Title</b>